

# MONTHLY MEMBERSHIP PROGRESS REPORT

LOCATION ALABAMA

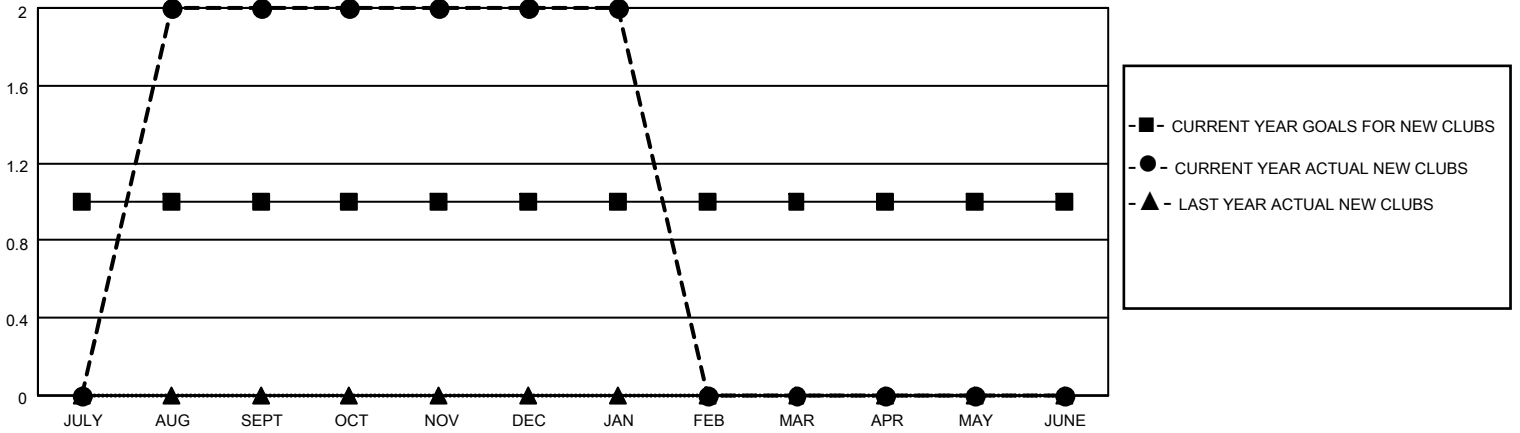
District 34 C

Results as of: 1/31/2023

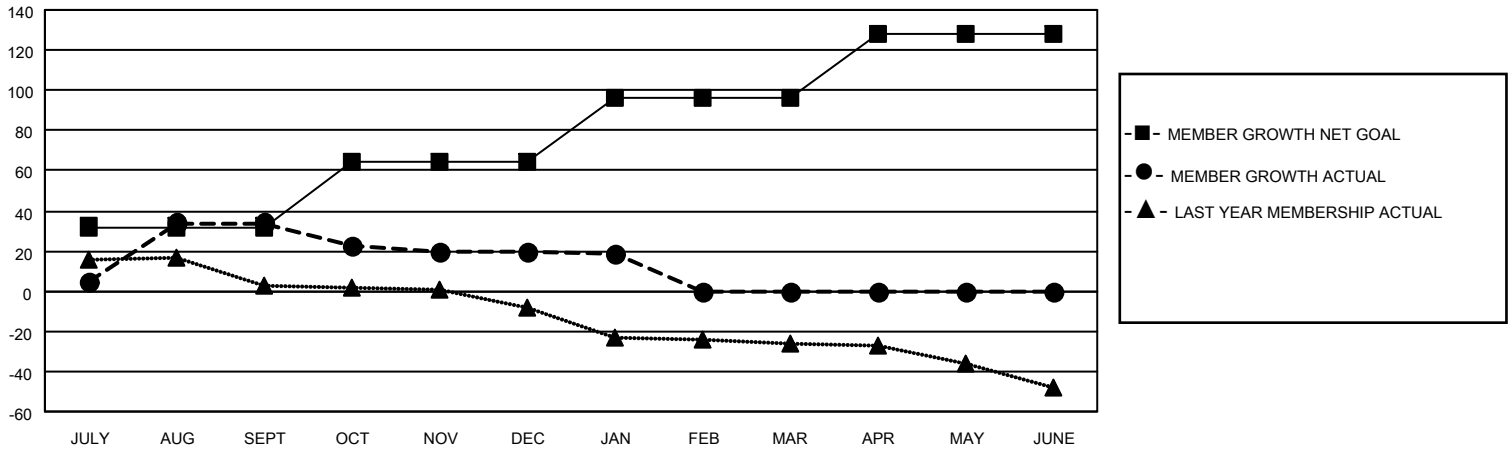
Clubs			
RESULTS FOR 2022-2023			
QUARTER	NEW CLUB GOAL	NEW CLUBS	DROPPED CLUBS
JULY/AUG/SEPT	1	2	0
OCT/NOV/DEC	0	0	0
JAN/FEB/MAR	0	0	0
APR/MAY/JUNE	0	0	0

Members			
RESULTS FOR 2022-2023			
QUARTER	MEMBER GROWTH NET GOAL	MEMBER GROWTH ACTUAL	DROPPED MEMBERS ACTUAL (including transfers)
JULY/AUG/SEPT	32	60	25
OCT/NOV/DEC	32	23	35
JAN/FEB/MAR	32	8	8
APR/MAY/JUNE	32	0	0

**GOALS AND ACTUAL NEW CLUBS CUMULATIVE**



**GOALS AND ACTUAL MEMBERS CUMULATIVE**



**DROPPED CLUBS: 0**

**21 CLUBS OF 37 ADDED 1 OR MORE NEW MEMBERS**

**GENDER DISTRIBUTION**

MALE	592 (61.60%)
FEMALE	368 (38.29%)
NON BINARY	1 (0.10%)
PREFER NOT TO ANSWER	0 (0.00%)

**DROPPED MEMBERS**

[CLICK HERE FOR CUMULATIVE MEMBERSHIP DATA](#)

DECEASED	5
CLUB CANCELLED	0
OTHER	63
<b>TOTAL</b>	<b>68</b>

TOTAL FAMILY UNIT MEMBERS	168
FAMILY MEMBERS PAYING HALF DUES	86